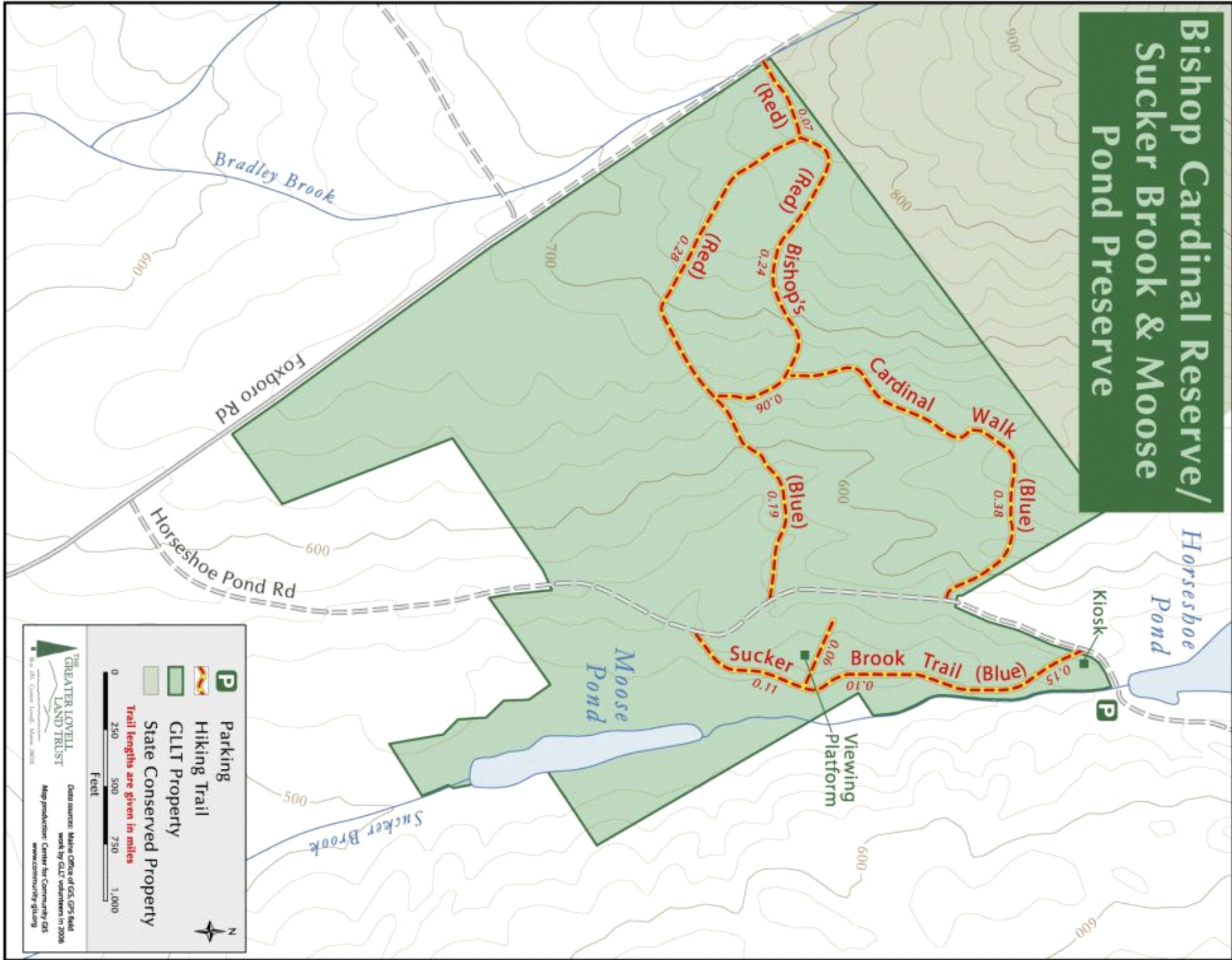




Wilson Wing Moose Pond Bog Preserve & Bishop's Cardinal Reserve



The Property

The generosity of the Wilson Wing family launched the project to protect significant habitats in the Horseshoe Pond area. The Wing's donation of 20.7 acres of land around Moose Pond was augmented by The Nature Conservancy, which added another 12 acres surrounding Sucker Brook, creating the Wilson Wing Moose Pond Bog Preserve, now owned by the GLLT. In 1998 the GLLT purchased the 69 acres west of the Horseshoe Pond Road now known as the Bishop's Cardinal Reserve.

The 32 acre Preserve is managed primarily in its natural state, while the 69 acre Reserve is managed to preserve water quality and support recreation, wildlife habitat and sustainable wood products.

Directions and trail maps for our other public properties can be obtained from our web site at www.gllt.org

Features

Wilson Wing Moose Pond Bog

This Preserve is host to a large variety of flora and fauna that thrive in the forested and wetland habitat present. Scarlet-red Cardinal flowers grace the brook in late summer. Spring birding, winter mammal tracking, and "owling" are favored activities. The GLLT has constructed a self guided nature interpretative trail for all ages and a view platform for your enjoyment.

Bishop Cardinal's Reserve

This reserve is host to a significant beech and northern hardwood forest supporting black bear, deer, moose and many more native species. Two small streams flow throughout the year. A small group of majestic and aged hemlocks are present along the northern boundary.

The GLLT has constructed two loop trails, with the Red Trail merging into the trail to the Lord's Hill mine and overlook, on the White Mountain National Forest.

Activity Guidelines

These properties open to public use for the following activities:

Wilson Wing Moose Pond Bog

- Hiking and picnicking
- Xcountry skiing Snowshoeing
- Nature Observation

These activities are **not allowed**:

- Camping or Fires
- Motorized vehicles/ATV's
- Mountain bikes/snowmobiles
- Cutting/removal of vegetation
- Hunting

Bishop Cardinal's Reserve

Permitted uses included

- Hiking and picnicking
- Xcountry skiing Snowshoeing
- Nature Observation
- Hunting

These activities are **not allowed**:

Camping or Fires

- Motorized vehicles/ATV's
- Mountain bikes/snowmobiles
- Cutting/removal of vegetation

Please use the land responsibly, leaving it just as you found it so that others may enjoy it as well.

Contact us: 207 925-1056

Greater Lovell Land Trust
P.O. Box 181
Center Lovell, ME 04016
www.gllt.org

We are a private, non-profit organization of local volunteers and fellow conservationists from across the U.S. and beyond, protecting our region's lands and waters in the interest of the public. We welcome new members and contributions such as help with land purchases, property easements, gifts, or volunteers for current projects. Please join us.

The GLLT Properties Commission manages our public lands and trails. For more information or to assist with its work contact Tom Henderson at 207 925-1056 or Burgess Smith at 207 935-9177.

GLLT Properties Commission

Beverly Bassett	Robert Bell
Ron Gestwicki	
Kevin Harding	Tom Henderson
Curtis Lansing	Jane Lansing
David Littell	Frank Robey
William Sayles	Burgess Smith
Dale Temm	Robert Winship

